

Minerva Pattern 2902

Pinafore with Patch Pockets

FABRIC RECOMMENDATIONS

Dress fabrics made from natural or blended fibers.

ADDITIONAL SUPPLIES

- Fusible interfacing;
- 2 buttons;
- 1 hidden button.

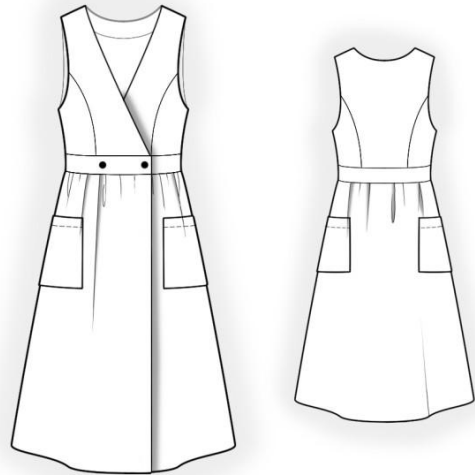
CUTTER'S MUST

From main fabric:

1. Center back – 1 piece on fold
2. Side back – 2 pieces
3. Back waistband – 1 piece
4. Lower back – 1 piece on fold
5. Center front – 2 pieces
6. Side front – 2 pieces
7. Front waistband – 2 pieces
8. Lower front – 2 pieces
9. Pocket – 2 pieces
10. Front neckline facing – 2 pieces
11. Back neckline facing – 1 piece

From fusible interfacing:

1. Front neckline facing – 2 pieces
2. Back neckline facing – 1 piece



IMPORTANT INFORMATION

First of all, print the paper patterns and lay them out on the fabric width (fabric width may be from 90 cm to 150 cm) in order to determine how much material you will need (do not forget to consider paired and symmetrical pieces).

When stitching pieces, pay attention to the notches – they must match.

SEWING INSTRUCTIONS

1. Interface the pieces with fusible interfacing.
2. Stitch the shaped seams of the upper back, press seam allowances toward the center, finish.
3. Stitch the shaped seams of the upper front, press seam allowances toward the center and finish.
4. Stitch shoulder seams, press seam allowances toward the back and finish.
5. Stitch shoulder seams of the neckline facings, press seam allowances open. Finish the outer edge. Place the facing and the garment right sides together and stitch the neckline edge. Clip seam allowances on curves, turn the pieces right side out, straighten, press. Secure the facing to the main garment at the shoulder seams.
6. Cut (if not ready-made) a bias strip 4 cm wide and length equal to the armhole length + 4 cm. Fold the bias strip lengthwise in the middle with the right side outward and press. Place the strip to the armhole edge from the right side and stitch, fold the strip to the wrong side and topstitch along the fold onto the main piece.
7. Stitch side seams of the upper part, press seam allowances toward the back and finish.
8. Along the upper edge of the lower back, sew a line with a loose upper thread and gather. Stitch the waistband to the lower back, press seam allowances upward, finish.
9. Along the upper edge of the lower front, sew a line with a loose upper thread and gather. Stitch the waistband to the lower front, press seam allowances upward, finish.
10. Stitch side seams of the lower part, press seam allowances toward the back and finish.
11. Finish the seam allowance of the upper edge of the pocket, press to the wrong side and topstitch. Finish the side and lower edges of the pocket, press to the wrong side. Place the pocket according to markings on the lower part and topstitch.
12. Finish the edge of the integrated facing of the lower front. Stitch the upper and lower parts of the garment, enclosing the upper front with the integrated facing, press seam allowances toward the waistband and finish. Turn the pieces right side out, straighten, press.
13. Finish the lower edge of the garment, press to the wrong side and topstitch.
14. On the right front, make a buttonhole; on the left front, sew a button. Make a buttonhole on the left front, sew the inner button. Sew the decorative button.