

Minerva Pattern 2900

Pinafore with Vertical Panel Seams

FABRIC RECOMMENDATIONS

Dense dress fabrics made from natural or blended fibers. Denim.

ADDITIONAL SUPPLIES

- Fusible interfacing;
- Separating zipper.

CUTTER'S MUST

From main fabric:

1. Center back – 2 pieces
2. Middle back – 2 pieces
3. Side back – 2 pieces
4. Center front – 2 pieces
5. Middle front – 2 pieces
6. Side front – 2 pieces
7. Back neckline facing – 1 piece
8. Front neckline facing – 2 pieces

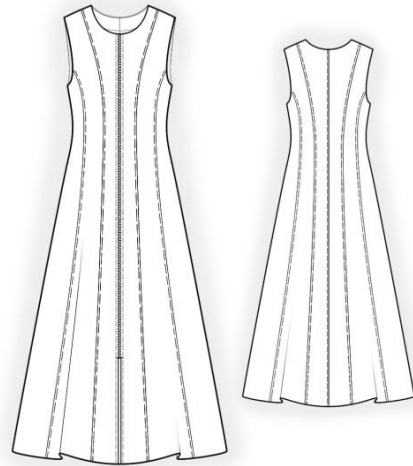
From fusible interfacing:

1. Back neckline facing – 1 piece
2. Front neckline facing – 2 pieces

IMPORTANT INFORMATION

First of all, print the paper patterns and lay them out on the fabric width (fabric width may be from 90 cm to 150 cm) in order to determine how much material you will need (do not forget to consider paired and symmetrical pieces).

When stitching pieces, pay attention to the notches – they must match.



SEWING INSTRUCTIONS

1. Interface the neckline facing pieces with fusible interfacing.
2. Stitch the relief seams of the back, press seam allowances toward the center, finish. Topstitch along the seams at 0.7 cm.
3. Stitch the center back seam, press seam allowances to the left side, finish. Topstitch along the seam at 0.7 cm.
4. Finish the center edges of the center front pieces. Insert the zipper. Topstitch along the zipper at a distance of 0.5 cm.
5. Stitch the relief seams of the front, press seam allowances toward the center, finish. Topstitch along the seams at 0.7 cm.
6. Stitch shoulder seams, press seam allowances toward the back and finish.
7. Stitch shoulder seams of the neckline facings, press seam allowances open. Finish the outer edge. Place the facing and the garment right sides together and stitch the neckline edge. Clip seam allowances on curves, turn the facings to the wrong side and press. Secure with the shoulder seams and the zipper tape.
8. Cut (if not ready-made) a bias strip 4 cm wide and length equal to the armhole length + 4 cm. Fold the bias strip lengthwise in the middle with the right side outward and press. Place the strip to the right armhole edge from the right side and stitch, fold the strip to the wrong side and topstitch along the fold onto the main piece.
9. Stitch side and shoulder seams, press seam allowances toward the back and finish.
10. Finish the hem allowance of the garment, press to the wrong side and topstitch.