

Minerva Pattern 2890

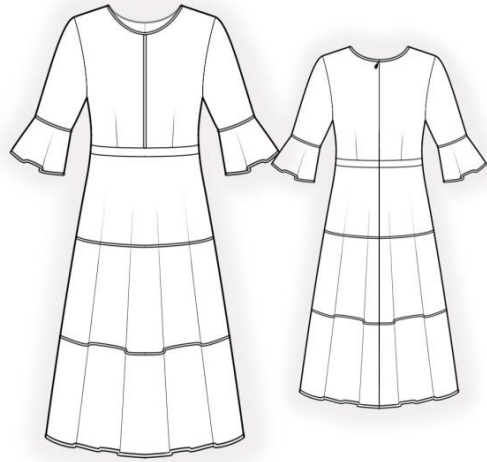
Dress with Horizontal Panel Seams

FABRIC RECOMMENDATIONS

Dress fabrics made from natural or blended fibers.

ADDITIONAL SUPPLIES

- Invisible zipper;
- Bias tape (approx. length indicated on lower front pattern piece);
- Decorative trim (approx. length indicated on lower front pattern piece).



CUTTER'S MUST

From main fabric:

1. Upper back – 2 pieces
2. Lower back – 2 pieces
3. Upper front – 2 pieces
4. Lower front – 1 piece on fold
5. Sleeve – 2 pieces
6. Cuff – 2 pieces

IMPORTANT INFORMATION

First of all, print the paper patterns and lay them out on the fabric width (fabric width may be from 90 cm to 150 cm) in order to determine how much material you will need (do not forget to consider paired and symmetrical pieces).

When stitching pieces, pay attention to the notches – they must match.

ASSEMBLY INSTRUCTIONS

1. Stitch darts on the upper front and upper back pieces. Trim dart intake to 1 cm, press toward the center and finish.
2. Stitch upper and lower back pieces, press seam allowances upward and finish.
3. Finish separately the center edges of the back. Stitch center back seam from zipper mark to bottom, press seam allowances open. Insert zipper.
4. Stitch center seam of upper front, press seam allowances open and finish. Topstitch bias tape onto the seam. Stitch upper and lower front pieces, press seam allowances upward and finish.
5. Stitch shoulder and side seams of the garment, press seam allowances toward the back and finish.
6. Prepare bias tape for neckline finishing equal to neckline length + 4 cm. Fold and press bias tape. Attach bias tape to neckline from the wrong side and stitch. Fold to the right side and topstitch along the edge onto the main fabric.
7. Attach cuff to sleeve, press seam allowances upward and finish. Topstitch bias tape onto the seam. Stitch sleeve seam, press seam allowances toward the back and finish. Set sleeves into armholes, press and finish.
8. Finish the hem of the garment and cuffs with bias tape.
9. Topstitch decorative trim onto the waist seam. Topstitch decoration onto lower panels according to markings.