

## Minerva Pattern 2885

### Two-Color Dress

#### FABRIC RECOMMENDATIONS

Dress fabrics made from natural or blended fibers in two related or contrasting colors.

#### ADDITIONAL SUPPLIES

- Fusible interfacing
- Invisible zipper

#### CUTTER'S MUST

##### From main fabric:

1. Center upper back – 2 pieces
2. Center lower back – 2 pieces
3. Center upper front – 2 pieces
4. Center lower front – 2 pieces
5. Front sleeve – 2 pieces
6. Back sleeve – 2 pieces
7. Front neckline facing – 1 piece
8. Back neckline facing – 2 pieces

##### From contrast main fabric:

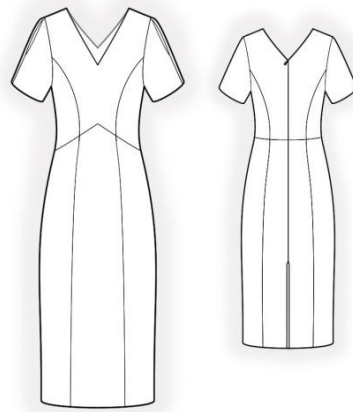
1. Side upper back – 2 pieces
2. Side lower back – 2 pieces
3. Side upper front – 2 pieces
4. Side lower front – 2 pieces

##### From fusible interfacing:

1. Front neckline facing – 1 piece
2. Back neckline facing – 2 pieces

#### IMPORTANT INFORMATION

First of all, print the paper patterns and lay them out on the fabric width (fabric width may be from 90 cm to 150 cm) in order to determine how much material you will need (do not forget to consider paired and symmetrical pieces).



When stitching pieces, pay attention to the notches – they must match.

## **ASSEMBLY INSTRUCTIONS**

1. Interface the pieces with fusible interfacing.
2. Stitch princess seams of the upper back, press seam allowances toward the center and finish. Stitch princess seams of the lower back, press seam allowances toward the center and finish. Stitch upper and lower back pieces, press seam allowances upward and finish.
3. Finish separately the center edges of the back. Stitch center back seam from zipper mark to bottom, press seam allowances open. Insert zipper.
4. Stitch princess seams of the upper front, press seam allowances toward the center and finish. Stitch princess seams of the lower front, press seam allowances toward the center and finish. Stitch upper and lower front pieces, press seam allowances upward and finish.
5. Stitch center front seam, finish seam allowances and press to the left side.
6. Stitch shoulder and side seams, press seam allowances toward the back and finish.
7. Stitch shoulder seams of neckline facings, press seam allowances open. Finish outer edge. Place facing and garment right sides together and stitch neckline. Clip seam allowances on curves and corners, turn to right side, straighten and press. Secure facing to garment at shoulder seams and zipper tape.
8. Finish separately the center edges of the sleeve. Stitch sleeve center seam from upper edge to upper mark and from lower mark to bottom. Press seam allowances open. Topstitch the slit at 0.2 cm. Stitch sleeve seam, finish seam allowances and press toward the back.
9. Set sleeves into armholes. Finish seam allowances and press.
10. Finish hem of garment and sleeves, press to wrong side and topstitch.