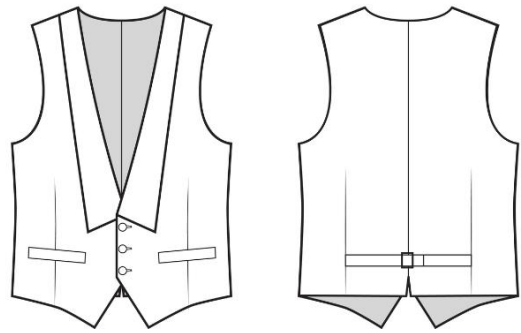


Minerva Pattern 6076

Minerva Digital Pattern 6076 – Tailcoat Waistcoat with Flat Collar

Introducing a digital pattern for the formal waistcoat designed for tailcoat ensembles – Refined Elegance with Traditional Detail.



When To Wear Design 6076

This waistcoat is the classic companion to a formal tailcoat, ideal for:

- White Tie Events: A traditional piece for evening dress codes requiring a tailcoat.
- Concert Performances & Ceremonies: The refined silhouette ensures elegance under formal jackets.
- Special Occasions: Weddings, galas, and receptions where sophistication is key.

Key Design Features

Silhouette: Fitted waistcoat with a cropped front length, shaped to balance with the long tails of a formal coat.

Collar: Flat collar lying neatly along the deep V neckline, creating a sharp tailored frame.

Closure: Three-button fastening at the center front.

Pockets: Two welt finishes at the lower front (faux welts).

Back: Streamlined back with shaping darts for a clean fit under a jacket, and an adjustable waist tie with buckle.

Lining: Full internal lining to neatly finish the front edges, armholes, and hem without additional facings.

Level Of Difficulty

Intermediate. Precision is required when constructing welt finishes, setting the collar, and achieving a crisp tailored result.

Fabric Recommendations

Choose structured, formal fabrics in natural or blended fibers for the body and lightweight lining for the interior finish:

- Wool suiting or worsted wool
- Wool blend or fine gabardine
- Satin or silk for lining
- Optional piqué cotton for traditional white tie versions

Additional Supplies

- Fusible interfacing – for collar, facings, and welt finishes
- Three buttons for front closure
- One metal buckle (approx. 2–2.5 cm) for the back waist tie

Cutter's Must

From Main Fabric:

- Front – 2 pieces
- Back – 2 pieces
- Collar – 2 pieces
- Front Facings – 2 pieces
- Pocket Welts – 2 pieces
- Back Tie – 2 pieces

From Lining Fabric:

- Front (minus facing) – 2 pieces
- Back – 2 pieces
- Collar - 2 pieces

From Interfacing:

- Collar – 2 pieces
- Front Facings – 2 pieces
- Pocket Welts – 2 pieces

Important Information

Before cutting your fabric:

- Print and lay out pattern pieces to determine yardage.
- Check mirrored pieces, notches, and grainlines.
- For patterned fabrics, align carefully for symmetry.

ASSEMBLY INSTRUCTIONS

Preparation

- Apply fusible interfacing to the outer collar pieces, front facings, and pocket welts.
 - Mark darts, pocket placements, and waist tie notches on all pieces.
-

Faux Welt Pockets

- Prepare the two welt strips by fusing interfacing.
 - Press each welt in half lengthwise, wrong sides together.
 - Position welts on the marked lower front placement lines.
 - Stitch in place, turning ends neatly. (No pocket bags are included; these are decorative welts.)
-

Front Assembly

- Sew waist darts on each front panel. Press darts toward the side seams.
 - Attach the front facings to the inner edges of the fronts, right sides together.
 - Stitch along the center front edges, from hem through neckline. Clip, grade, and understitch where possible.
-

Back Assembly

- Sew the back darts and press them toward the center back.
 - Construct the back waist tie: stitch two tie pieces together, turn right side out, press, and attach a metal buckle at center.
 - Position the waist tie between notches on the back panels, securing ends into side seams.
 - Sew the back panels together at center back seam. Press seam open.
-

Shoulder and Side Seams

- Join fronts to the back at the shoulder seams. Press allowances open.
 - Stitch side seams, enclosing the waist tie ends. Press allowances open.
-

Collar

- Pair each outer collar piece with a lining collar piece, right sides together.
 - Stitch along outer edges, clip curves, and turn right side out. Press flat.
 - Attach the outer collar to the waistcoat neckline.
 - Attach the lining collar to the lining neckline (see below).
-

Lining

- Sew darts in lining front and back. Press darts flat.
 - Join lining pieces at shoulder seams and side seams.
 - Attach lining collar to lining neckline.
 - Place lining right sides together with the waistcoat body. Stitch along front edges, neckline, and hem, leaving armholes open.
 - Clip, grade, and turn lining inside. Press carefully at edges.
-

Armholes

- Finish armholes using the “bagging” method:
 - With waistcoat inside out, align lining and outer fabric around each armhole.
 - Stitch together, then turn through side seam or hem opening.
- Press armholes smoothly.

Finishing

- Work three buttonholes on the right front.
- Sew three buttons to the left front.
- Adjust the back tie through the buckle for fit.
- Final press for a crisp tailored finish.

**Discover more styles tailored to your custom measurements at
MinervaPatterns.com**