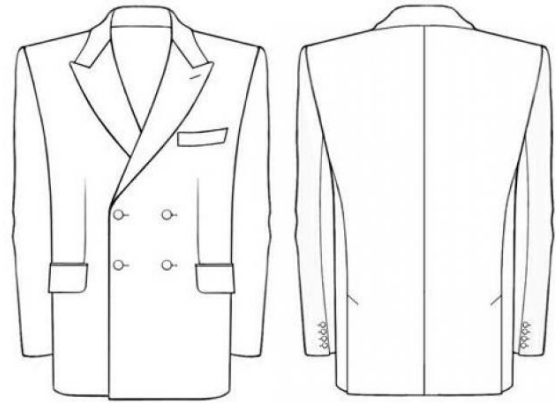


## Minerva Pattern 6073

### Men's Double-Breasted Jacket with Double Back Vents

Introducing a digital pattern for the semi-fitted double-breasted jacket with peaked lapels – Classic Tailoring with Modern Precision.



#### When To Wear Design 6073

This jacket delivers timeless elegance and structured style, making it ideal for:

- Business & Formal Events: A polished layer over shirts or fine knits for meetings and evening occasions.
- Seasonal Outerwear: Works as a smart top layer in cooler weather when sewn in wool suiting.
- Stylish Everyday Looks: Pair with tailored trousers or dark denim for a refined casual outfit.

#### Key Design Features

**Silhouette:** Semi-fitted hip-length jacket with front and back shaping for a clean, tailored line.

**Front:** Double-breasted closure with peaked lapels, chest welt pocket, and two front flap pockets.

**Back:** Center-back seam and double vents for comfort and movement.

**Sleeves:** Two-piece sleeves finished with functional button vents.

**Cut:** Front panels extend to the side-back without side seams for a smooth, uninterrupted profile.

#### Level Of Difficulty

**Advanced.** Requires precise tailoring skills for lapel construction, structured shoulder shaping, and careful lining insertion.

#### Fabric Recommendations

Medium- to heavy-weight fabrics that maintain structure and drape:

- Wool suiting or tweed
- Wool-blend coatings
- Cotton twill or gabardine

For lining, choose Bemberg (cupro), silk satin, acetate, or quality polyester for a smooth interior finish.

#### Additional Supplies

- Fusible interfacing – for fronts, lapels, collars, flaps, facings, and welt pocket
- Four front buttons for the double-breasted closure
- Eight small buttons for sleeve vents

- Quality jacket lining

## **Cutter's Must**

### **From Main Fabric:**

1. Back – 2 pieces
2. Front – 2 pieces
3. Side – 2 pieces
4. Upper Sleeve – 2 pieces
5. Lower Sleeve – 2 pieces
6. Outer Collar – 1 piece
7. Stand Collar – 2 pieces
8. Front Band – 2 pieces
9. Flap – 2 pieces
10. Off-set Welt – 1 piece
11. Pocket Bag – 2 pieces
12. Small Sacking – 1 piece
13. Facing – 4 pieces
14. Inner Collar – 1 piece

### **From Lining Fabric:**

1. Back (add 2 cm at center for pleat) – 1 piece
2. Front (excluding front facing) – 2 pieces
3. Side – 2 pieces
4. Upper Sleeve – 2 pieces
5. Lower Sleeve – 2 pieces
6. Flap – 2 pieces
7. Pocket Bag – 2 pieces
8. Small Sacking – 1 piece

### **From Fusible Interfacing:**

1. Fronts, collars, facings, flaps, and off-set welt – as required for reinforcement.

## Important Information

Before cutting your fabric:

- Print and lay out pattern pieces to determine yardage.
- Check mirrored pieces, notches, and grainlines.
- For patterned fabrics, align carefully for symmetry.

## ASSEMBLY INSTRUCTIONS

### Preparation

#### Fuse Interfacing

From the wrong side, apply medium-weight fusible interfacing to:

Front Panels, Front Facings, Upper Collar, Under Collar, Collar Stand, Pocket Flaps, Welt, Vent Facings, and Sleeve Vent Facings.

(Press with a hot iron and a press cloth to fully bond.)

---

### Chest Welt Pocket

Prepare Welt

- Fold the welt lengthwise right sides together.
- Stitch short ends, trim corners, turn, and press.

Pocket Opening

- Mark the chest pocket placement on the Left Front.
  - Position welt face down along the marked opening with the small pocket bag underneath.
  - Stitch around the pocket rectangle.
  - Slash the opening through center and clip diagonally to corners.
  - Turn pocket bags to inside, straighten edges, and press.
  - Join pocket bags and stitch around perimeter.
  - Understitch welt and press.
- 

### Lower Flap Pockets

Flaps

- Place each flap right sides together with its lining.
- Stitch outer edges, trim corners, turn, and press.
- Topstitch 0.5 cm from edge.

Pocket Openings

- Mark pocket placement on both Fronts.
  - Prepare openings using the double-lip method.
-

- Attach pocket bags and secure flaps, turning them down and topstitching 0.5 cm from seam.
- 

## **Back & Vents**

### Center Back and Vents

- Join the Back Panels along the center seam from neckline to vent break.
  - Press seam allowances open.
  - Finish vent edges with facings, pressing allowances to the inside.
  - Turn left and right vent facings to the right side, stitch along hem fold line, clip corners, turn, and press.
  - Baste vents closed temporarily to maintain shape.
- 

## **Body Assembly**

- Sew Front Darts; press toward center.
  - Join Side Panels to Fronts along princess seams; press toward side-back.
  - Join Shoulder Seams; press toward back.
  - Sew Side Seams; press open.
- 

## **Collar & Facings**

- Join Upper Collar to Collar Stand; press seams open and topstitch close to both sides of seam.
  - Join Under Collar to its stand in the same manner.
  - Attach Front Facings to Upper Collar.
  - Place Facings right sides together with Fronts and stitch along lapels and front edges.
  - Grade, clip, turn right side out, and press for a crisp lapel edge.
  - Insert Under Collar into jacket neckline, aligning notches; stitch and press.
- 

## **Sleeves**

### Two-Piece Sleeve with Button Vent

- Join Upper and Under Sleeve along the back seam; press open.
  - Prepare sleeve vent facings and stitch as marked.
  - Sew front sleeve seam.
  - Ease sleeve cap with a long machine stitch between notches; steam-shrink excess.
  - Set sleeves into armholes, matching notches and distributing ease evenly.
  - Insert shoulder pads and sleeve heads.
- 

## **Lining**

- Assemble lining in the same sequence as shell, adding a 2 cm pleat at Center Back for wearing ease.
-

- With right sides together, stitch lining to Front Facings and Under Collar, leaving a 20 cm opening in one sleeve seam for turning.
  - Press all seams toward lining.
- 

### **Bagging & Hem**

- Turn jacket hem along fold line and press.
  - With jacket and lining right sides together, stitch continuously around hem, lapels, collar, and both vents.
  - Turn garment right side out through sleeve opening and close opening with invisible stitches.
  - Hand-tack lining to vent facings, hem allowance, and armhole seam allowances with swing tacks.
- 

### **Finishing**

- Work buttonholes on Left Front and sleeve vents as marked.
- Sew buttons to Right Front and sleeve vents.
- Remove vent basting, allowing vents to hang freely.
- Give jacket a full steam press, shaping lapels over a tailor's ham to set the roll.

**Discover more styles tailored to your custom measurements at  
[MinervaPatterns.com](https://MinervaPatterns.com)**