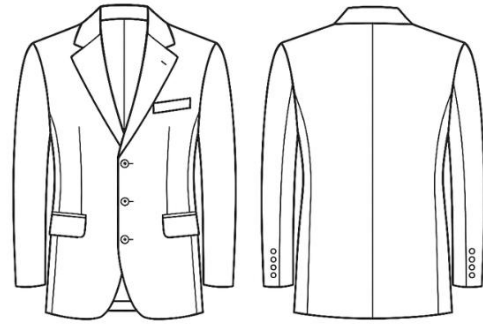


Minerva Pattern 6017

Men's Classic Single-Breasted Jacket with Double Back Vents

Introducing a digital pattern for the single-breasted tailored jacket with three-button closure – Timeless Menswear with Modern Precision.



When To Wear Design 6017

This structured blazer offers versatile elegance, making it ideal for:

- Business & Formal Events: A polished essential for office meetings, presentations, and professional gatherings.
- Smart Casual Outings: Pair with jeans or chinos for a refined weekend look.
- Special Occasions: A classic jacket that completes both day and evening ensembles.

Key Design Features

Silhouette: Tailored single-breasted blazer with three-button front closure and a clean back with center seam.

Collar & Lapel: Notched lapel with structured collar for a sharp, modern profile.

Pockets: Two front flap pockets, one welt chest pocket, and inner pocket options.

Sleeves: Long two-piece sleeves finished with four decorative buttons at the vent.

Back: Center-back seam with double vents for ease of movement.

Level Of Difficulty

Advanced. Precision is required for constructing the lapel, setting tailored sleeves, and achieving a professional finish with canvas stitching and interfacing.

Fabric Recommendations

Choose high-quality suiting fabrics in natural or blended fibers for crisp tailoring:

- Pure wool or wool blends
- Worsted suiting or lightweight tweed
- Fine gabardine or structured cotton blends

Additional Supplies

- Fusible interfacing for fronts, facings, collar, and pocket flaps
- Hair canvas or basting tape for lapel shaping

- Shoulder pads
- Three front buttons (20 mm)
- Eight small sleeve buttons (14 mm)
- Lining fabric to match
- Optional sleeve head wadding

Cutter's Must

From Main Fabric:

1. Jacket Back – 2 pieces
2. Jacket Front – 2 pieces
3. Side Panel – 2 pieces
4. Upper Sleeve – 2 pieces
5. Under Sleeve – 2 pieces
6. Upper Collar – 1 piece
7. Collar Stand – 1 piece
8. Under Collar – 1 piece
9. Front Facing – 2 pieces
10. Pocket Flap – 2 pieces
11. Welt Pocket Piece – 1 piece
12. Pocket Bag – 2 pieces

From Lining Fabric:

1. Back with ease pleat – 1 piece on fold
2. Front minus facing – 2 pieces
3. Side Panel – 2 pieces
4. Upper Sleeve – 2 pieces
5. Under Sleeve – 2 pieces
6. Pocket Bags – 2 pieces

From Fusible Interfacing:

1. Fronts – 2 pieces
2. Front Facing – 2 pieces
3. Upper Collar – 1 piece
4. Collar Stand – 1 piece

5. Under Collar – 1 piece
6. Pocket Flaps – 2 pieces
7. Welt Pocket Piece – 1 piece

Additional Tailoring Notes

- **Canvas Transfer for Lapel Support:** For the basting canvas, trace the upper marked portion of the jacket front above the dashed lapel line. This ensures accurate shaping and proper roll of the lapel during construction.
- **Plaid & Stripe Matching:** When cutting plaid or striped fabrics, carefully pin and align each pattern piece to preserve perfect check or stripe alignment across seams and pockets.

Important Information

Before cutting your fabric, print and lay out the paper patterns according to your fabric width (90–150 cm) to determine yardage. Remember to include paired and symmetrical pieces. When matching plaid or stripe fabrics, carefully align grainlines to ensure pattern continuity across seams.

ASSEMBLY INSTRUCTIONS

Preparation

1. Apply fusible interfacing to the front facings, upper and under collars, stand collar, welt pocket flap, pocket flaps, and pocket welts. (Fusible interfacings are pressed to the wrong side of the pieces with a hot iron.)

Chest Pocket

2. Slash the pocket opening, stitch and press open the dart; baste the pocket opening.
3. On the left front, construct a single-welt breast pocket:
 - Fold the welt lengthwise right sides together and stitch across the short ends. Turn right side out and press.
 - Pin the welt (turned downward) to the garment front along the marked placement line.
 - Place the pocket bag of lining fabric over the welt, then pin the pocket bag of main fabric turned upward above it. Stitch 5 mm on either side of the marked line.
 - Slash the opening between the stitching lines, clipping diagonally into the corners. Turn the pocket bags to the inside.
 - Secure the free edge of the welt to the pocket bag with zigzag stitches.
 - Align both pocket bags and stitch around the contour.
 - From the right side, secure the welt ends to the garment.

Front & Side Seams

4. Join princess seams of the front and press allowances open.

Pocket Flaps

5. With right sides together, stitch flaps to lining. Turn right side out and press.

Hip Pockets

6. On each front, construct a double-welt pocket with flap:
 - Fold welts lengthwise right sides together and press.
 - Pin the welts to the garment along the marked placement, facing in opposite directions.
 - Place the pocket bag of lining fabric onto the lower welt and the pocket bag of main fabric onto the upper welt, inserting the flap (turned upward) between the upper welt and main pocket bag.
 - Stitch 5 mm on either side of the marked line.
 - Slash the opening between the stitching lines, clipping diagonally into corners. Turn pocket bags to the inside, fold welts over 1 cm and press.
 - Secure the free edges of the welts to the pocket bags with zigzag stitches.
 - Align the pocket bags and stitch around the contour.
 - On the wrong side, stitch the welt ends to the fabric triangles to secure.

Reinforcement

7. Slash the dart in the canvas interfacing, align the edges, and secure with a wide zigzag stitch.
8. From the wrong side of the front, quilt the canvas along the marked lines.

Body Assembly

9. Stitch the back along the center seam.
10. Stitch the shoulder seams.
11. Join side panels to the back up to the vents. Press allowances open.

Collar & Facings

12. With right sides together, stitch stand collar to upper collar and press allowances open.
13. Stitch the under collar to the neckline. Attach the upper collar to the facings; press allowances open.
14. With right sides together, place the upper collar with facings onto the garment and stitch along front edges and collar. Turn right side out, press, and slipstitch the neckline edge of the upper collar to the garment.

Sleeves

15. Construct the two-piece sleeve with vent:
 - Stitch upper and under sleeve together up to vent notch, easing the upper sleeve beforehand. Press allowances open and turn sleeve right side out.
 - Fold the vent allowances and hem allowance to the right side, stitch the corner diagonally, trim excess seam allowance to 1 cm, and press open.
 - Turn allowances to the inside, secure hem and vent allowance with cross-stitch, and press vent flat.
16. Set in the sleeve:

- Ease sleeve cap between notches with gathering stitches. Draw up threads until sleeve cap fits armhole. Steam-shrink ease and press lightly with tip of hot iron.
- Pin sleeve to garment, matching notches, and stitch from sleeve side.

17. Fold batting (padding) in half lengthwise and hand-stitch to sleeve caps from wrong side.

Vents & Hem

18. Fold back vent facing to right side, stitch along hemline, turn right side out, and slipstitch.

19. Fold hem allowance of side panel to right side, stitch along vent facing edge, turn right side out, and slipstitch.

20. Overlap back vents and secure with a diagonal tack at top.

21. Turn sleeve hem allowances to inside and slipstitch invisibly.

Finishing

22. Sew in shoulder pads.

23. Stitch center back seam of lining.

Lining

24. Construct lining similar to garment, leaving a 20 cm opening in one sleeve seam.

- Add an ease pleat at center back lining and secure at neckline and above hem.
- Insert lining into garment right sides together, matching center back and shoulder seams.
- Stitch lining to front facings and neckline.
- Add ease pleat along garment hem. Attach lining hem to garment hem allowance, stitching lining to side and back vent facings (clip lining allowance at vent base if necessary).
- Turn garment right side out through sleeve opening, then stitch opening closed.

Buttonholes & Buttons

25. Work buttonholes on left front and lapel as marked; sew buttons.

26. Work non-cut buttonholes on sleeves for decoration and secure vents with buttons.

Discover more styles tailored to your custom measurements at
MinervaPatterns.com