

Minerva Pattern 6014

Single-Breasted Coat with Raglan Sleeves and Patch Pockets

Introducing a digital pattern for a straight overcoat with raglan sleeves and roomy patch pockets – Relaxed Tailoring with Timeless Elegance.

When To Wear Design 6014

This coat delivers understated sophistication and all-day comfort, perfect for:

- City Errands & Travel: Easy to layer over tailoring or knitwear for crisp days.
- Weekend Outings: A classic shape that works with casual or dressed-up looks.
- Seasonal Transitions: Medium-weight wool keeps you warm without bulk.

Key Design Features

Silhouette: Straight, knee-length overcoat with a relaxed raglan sleeve cut for ease of movement.

Collar & Lapels: Tailored notched collar with two-piece stand for a clean, structured neckline.

Closure: Front single-breasted placket with three large buttons.

Sleeves: Two-piece raglan sleeves with adjustable buttoned straps at the cuffs.

Pockets: Generous patch pockets with flaps.

Back: Center-back seam with a single vent for comfortable walking.

Level Of Difficulty

Intermediate to Advanced. Precision tailoring is required for the collar, raglan sleeves, and pocket flaps.

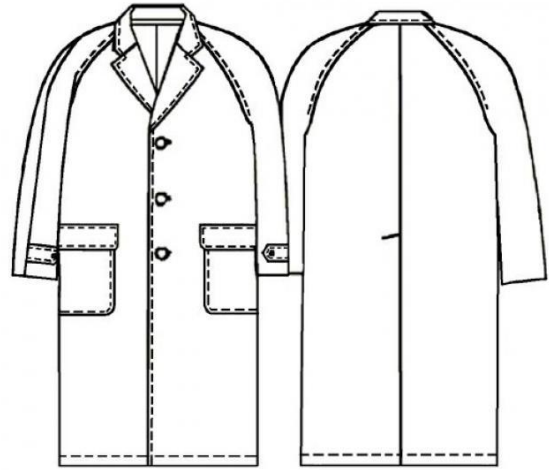
Fabric Recommendations

Choose warm, structured coatings to showcase the clean lines:

- Wool or wool-blend coatings, brushed or plain
- Wool herringbone or tweed for a heritage look
- Heavy suiting fabrics for a sleeker silhouette

Additional Supplies

- Fusible interfacing – approx. 1.20 m (width 140 cm) for facings, collar, and pocket flaps
- Lining fabric – amount varies with size
- 3 large buttons (approx. 25 mm) for front closure
- 2 smaller buttons (approx. 15 mm)



Cutter's Must

From Main Fabric:

1. Back – 2 pieces
2. Front – 2 pieces
3. Sleeve Back – 2 pieces
4. Sleeve Front – 2 pieces
5. Front Facing – 2 pieces
6. Pocket Flap – 2 pieces
7. Pocket – 2 pieces
8. Under Collar – 1 piece
9. Collar Stand – 2 pieces
10. Upper Collar – 1 piece
11. Sleeve Strap – 2 pieces

From Lining Fabric:

1. Back – 2 pieces (add 2 cm along center back for ease pleat)
2. Front – 2 pieces (omit facing area)
3. Pocket – 2 pieces (shorten upper edge by 3 cm)
4. Sleeve Back – 2 pieces
5. Sleeve Front – 2 pieces
6. Pocket Flap – 2 pieces
7. Sleeve Strap – 2 pieces

From Fusible Interfacing:

Apply to front pieces, under collar, collar stand, pockets, pocket flaps, hem allowances, and sleeve straps.

Important Information

Before cutting your fabric:

- Print and lay out pattern pieces to determine yardage.
- Check mirrored pieces, notches, and grainlines.
- For patterned fabrics, align carefully for symmetry.

ASSEMBLY INSTRUCTIONS

Preparation

1. Fuse Interfacing
From the wrong side, apply fusible interfacing to the Under Collar, Collar Stand, Pocket, Pocket Flap, and Hem Allowances (press firmly with a hot iron).
-

Pockets

2. Pocket Bags
Attach pocket lining to the upper edge of each Pocket. Turn to the inside, align raw edges, and topstitch 1.5 cm along the upper edge.
 3. Turn under pocket seam allowances, press, and hand-baste pockets to each Front along the placement markings. Hand-stitch invisibly, then topstitch 1.5 cm from the edge.
 4. Pocket Flaps
With right sides together, stitch each Flap to its lining. Turn right side out and topstitch 1.5 cm from edges.
 5. Pin each flap to the Front along the placement line with the flap turned upward. Stitch across the placement seam. Turn flap down and topstitch 1.5 cm along the seam.
-

Coat Body

6. Join Center Back seam up to the vent. Press seam allowances toward the left side and topstitch 1.5 cm from the seam.
 7. Turn the left vent facing to the right side along the hem allowance and stitch along the hem foldline. Turn right side out and press. Topstitch 1.5 cm along the fold of the left vent.
 8. Turn the hem allowance of the right back to the right side along the vent facing edge, stitch along the vent seam, turn right side out, and press.
 9. Lay the vent to the left side and secure at the upper edge with a diagonal reinforcement stitch.
 10. Join Side Seams; press allowances open.
-

Sleeves

11. Sew Sleeve Underseam and press allowances open.
 12. Set sleeves into the armholes, matching notches.
 13. Sleeve Tabs
With right sides together, stitch each Sleeve Tab to its lining. Turn right side out and topstitch 1.5 cm from edges. Pin tabs to sleeves along the markings and baste.
-

14. Stitch Shoulder Seams, catching sleeve tabs into the seams.
-

Collar & Facings

15. Join one Collar Stand to the Upper Collar and the other to the Under Collar. Press allowances open and topstitch 1.5 cm along both sides of the seams.
16. Stitch Under Collar to the neckline of the coat. Stitch Upper Collar to the Front Facings.
17. Place Upper Collar/Facing unit right sides together with the coat body. Align edges and stitch around front edges and collar. Turn right side out and stitch collars together along the lower collar edge.
18. Topstitch 1.5 cm around collar and front edges.
-

Hem & Lining

19. Turn hem allowance to the inside.
20. Lining
- Create a center back pleat for wearing ease and secure at neckline and a few centimeters above hem.
 - Assemble lining as for the coat, leaving a 20 cm opening in one sleeve seam.
 - With right sides together, sew lining to the coat along front facings and neckline.
 - Fold up the hem allowance, forming a jump pleat, and stitch lining to the hem edge, catching lining to the vent facings. (Make a horizontal clip at the base of the left vent lining as needed.)
 - Turn coat right side out through the sleeve opening and close the opening.
21. Topstitch 1.5 cm along the finished coat hem.
-

Finishing

22. Work buttonholes on the Left Front and sew buttons to the Right Front and Sleeve Tabs as marked.

**Discover more styles tailored to your custom measurements at
MinervaPatterns.com**