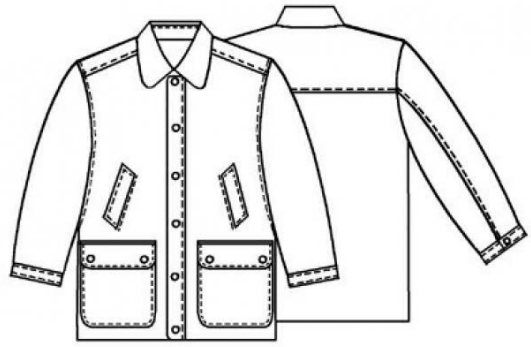


Minerva Pattern 6012

Men's Field Jacket with Flap Pockets

Introducing a digital pattern for the structured jacket with patch pockets, angled welt pockets, and button-front closure – Functional Style with Tailored Utility.



When To Wear Design 6012

This versatile jacket combines rugged practicality with refined tailoring, making it suitable for:

- Outdoor City Wear: A stylish layer for transitional seasons.
- Travel & Adventure: Durable structure and practical pocket design.
- Smart Casual Outfits: Works equally well with denim, trousers, or over a shirt.

Key Design Features

Silhouette: Straight, structured cut with tailored shoulder line.

Closure: Front button placket with medium to large buttons for secure fastening.

Collar: Classic shirt-style collar with structured stand.

Pockets: Two large patch pockets with flaps and buttons, plus two angled welt pockets on the chest.

Sleeves: Long sleeves with buttoned cuffs for adjustability.

Back: Yoke seam across the shoulders for structure and ease.

Level Of Difficulty

Intermediate to Advanced. Involves precision in sewing welt pockets, attaching flaps, and setting structured collar and cuffs.

Fabric Recommendations

- Wool coating or wool blends with structure
- Twill, gabardine, or canvas
- Leather (for a more elevated version)

Recommended lining fabric: lightweight satin or cupro in matching tone.

Additional Supplies

- Brown wool fabric in subtle check (yardage to be determined by fabric width 90–150 cm and pattern layout)
- Lining fabric to match
- 1.5 m fusible interfacing (140 cm width)

- 45 cm cotton fabric in matching tone (for pocket bags)
- 8 leather-covered buttons, 22 mm diameter
- 4 leather-covered buttons, 18 mm diameter
- One two-way separating zipper, 64 cm (length may vary depending on size)

Fusible interfacing is applied to collar, pocket flaps, facings, sleeve cuffs, and hem allowance.

Cutter's Must

From Main Fabric:

1. Upper Collar – 1 piece on fold
2. Under Collar – 1 piece on fold
3. Collar Stand – 2 pieces on fold
4. Pocket Welt - 2 pieces
5. Back Yoke – 1 piece on fold
6. Patch Pocket – 2 pieces
7. Patch Pocket Flap – 4 pieces
8. Pocket Side Section – 2 pieces
9. Left Placket Facing – 2 pieces
10. Right Front Facing – 2 pieces
11. Front – 2 pieces
12. Upper Sleeve – 2 pieces
13. Lower Sleeve – 2 pieces
14. Back – 1 piece on fold
15. Cuffs – 4 pieces
16. Sleeve Facing – 2 pieces

From Cotton Fabric:

1. Pocket Bag – 4 pieces
2. Pocket Lining – 4 pieces

From Lining Fabric:

1. Back – 1 piece on fold
2. Front – 2 pieces
3. Sleeve – 2 pieces
4. Pocket Bag – 2 pieces

Important Information

Before cutting your fabric:

- Print and lay out pattern pieces to determine yardage.
- Check mirrored pieces, notches, and grainlines.
- For patterned fabrics, align carefully for symmetry.

ASSEMBLY INSTRUCTIONS

Preparation

Fuse Interfacing

From the wrong side, apply fusible interfacing to the following pieces:

- Upper and Under Collar
- Collar Stand pieces
- All Pocket pieces
- Front Facing (Right Front)
- Outer Placket (Left Front)
- Hem allowance of Fronts, Back, and Sleeves
- Half-width of Pocket Welts
- All Pocket Flaps

(Fuse with a hot iron and press cloth until fully bonded.)

Patch Pockets

- Fold the Side Section of the Pocket in half lengthwise, right sides together. Stitch 2.5 mm from the fold.
- Attach one side of the Side Section to the side and lower edges of the Pocket, right sides together, leaving the pocket hem extension free. Press the Side Section to the inside and topstitch along the edge.
- Place Pocket Bag pieces right sides together, stitch side and lower seams.
- Attach the upper edge of one Pocket Bag piece to the top edge of the Pocket, right sides together. Turn, press, and topstitch 1.5 cm from the edge.
- Place the completed Pocket with lining onto the Front at markings. Turn in the inner lining allowance and raw edges of the Pocket Side Section, then topstitch to secure.
- Press pocket neatly, turning the Side Section inward.

Pocket Flaps

- Place Flap pieces right sides together, stitch around outer edges. Turn, press, and topstitch 1 cm.
 - Position Flap facing upward at pocket placement line, stitch, trim allowances to 5 mm. Turn flap down, press, and topstitch 1 cm to secure.
-

Chest Welt Pockets

- Fold each Welt in half lengthwise, right sides together, and stitch short ends. Turn, press, and topstitch 1 cm, tapering diagonally at corners.
 - Place Welt facing downward at marked pocket opening. Layer pocket bags (lining on Welt side, main fabric pocket bag facing upward) and stitch 5 mm on both sides of the marked line.
 - Cut along the center of the opening, clipping diagonally into corners. Turn pocket bags to inside.
 - Zigzag free edge of Welt to the lining pocket bag.
 - Align pocket bags, stitch around edges.
 - Secure welt ends to garment with short diagonal topstitching 1 cm.
-

Yoke

- Place Back and Yoke pieces right sides together, stitch across shoulders. Turn right side out, press seam allowance toward Yoke, and topstitch 1 cm.
 - Attach Yoke to Fronts in the same way, matching notches.
-

Body Assembly

- Sew side seams, press seam allowances toward Back, and topstitch 5 mm.
-

Sleeves

- Sew upper and under sleeve seams to the slit mark. Overlock seam allowances, press toward upper sleeve, and topstitch 1 cm. Below slit, press allowances open.

Sleeve Placket

- Place sleeve placket facing right side to wrong side of sleeve at slit. Stitch.
 - Finish opening edges with a narrow turned hem. Clip seam allowance at base, turn half the placket to right side, fold raw edges under, and topstitch along the slit.
 - Sew lower sleeve seam.
 - Insert sleeve into armhole, matching notches. Overlock seam allowances, press toward armhole, and topstitch 1 cm.
-

Cuffs

- Place Cuff pieces right sides together, stitch short ends and one long edge. Turn, press.
 - Place interfaced side of Cuff to sleeve hem, right sides together. Stitch. Turn, fold under inner edge, and stitch along previous seam line. Continue decorative topstitching 5 mm around cuff.
-

Plackets & Facings

- Stitch Left Front Placket right sides together along curved and lower edges. Turn, press, and topstitch 1 cm.
 - Prepare Right Front Facing in the same way.
-

Lining

- Assemble lining the same as the shell but without topstitching. Turn up hem allowance and baste.
-

Collar

- Join Collar Stand to Upper Collar, press seam allowance upward, and topstitch.
 - Join second Collar Stand to Under Collar in the same way.
 - Insert Under Collar with stand into neckline of shell, right sides together. Insert Upper Collar with stand into neckline of lining.
-

Front Closure (Zipper)

- Open zipper. Pin right half of zipper, teeth toward side seam, to Right Front Facing along placement line. Place Right Front Facing over zipper, fold toward side seam, and baste layers.
 - Pin second half of zipper to Left Front Placket in the same way.
 - Place shell and lining right sides together, matching edges. Turn up hem allowance of shell onto lining. Stitch collar and front edges, catching zipper and facing. Turn and press.
 - From inside, slipstitch lower edge of Upper Collar to shell neckline.
-

Hem & Finishing

- Press hem to inside. Topstitch along edge.
- Slipstitch lining hem to shell hem, allowing for ease pleat.
- Attach Left Front Placket along markings, trim seam allowances to 5 mm, press forward, and topstitch 1 cm.
- Slipstitch sleeve lining hems to sleeve facings.

Buttonholes & Buttons

- Work buttonholes on placket, flaps, sleeve tabs, and collar fastening.
- Sew buttons:
 - 18 mm for sleeves
 - 22 mm for fronts and pockets

Discover more styles tailored to your custom measurements at
MinervaPatterns.com